

eCommerce Performance Analytics for CPG Private Label

12th Apr, 2022



BY NADIR



Item	Size	Private Label Item	
		Albertsons	amazonfresh
Bread	24 oz	\$2.17	\$4.55
Cat Food	6.3 lb	\$4.95	\$4.52
Cereal	18.8 oz	\$2.17	\$2.51
Cola	2 liter	\$0.50	\$1.96
Toothpaste	4.8 oz	\$4.19	\$2.87
Diapers (Sz 5)	19 Pack	\$3.85	\$5.75
Eggs	1 Dozen	\$1.26	\$2.66
Granulated Sugar	10 lb	\$5.99	\$7.48
Iodized Salt	26 oz	\$0.79	\$0.63
Ketchup	32 oz	\$2.10	\$1.89
Liquid Laundry Detergent	154 oz	\$17.84	\$24.25
Milk	1 gallon	\$3.09	\$2.99
Olive Oil	16.9 oz	\$2.67	\$3.48
Peanut butter	40 oz	\$4.27	\$3.73
Water	1 liter 12	\$2.35	\$2.08

The combination of economic uncertainty, inflation, and perceived affordability has increased consumer's willingness to buy and try more private label products, challenging National brands to differentiate their eCommerce strategies, especially those related to price positioning, in other ways.

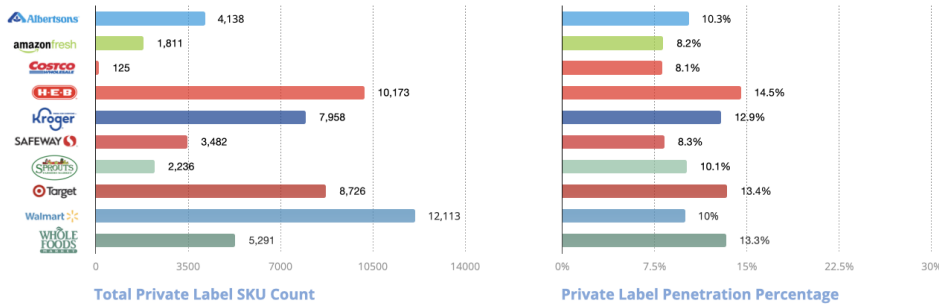
Our previously released report, [Inflation Accelerates Private Label Share and Penetration](#), confirmed 8 out of 10 brands with the highest SKU count carried across all grocery retailer websites to be private label, signaling the strength of their digital Share of Voice. Given the growing shift in consumer preference toward private label brands, we are providing access to the latest trends seen from September 2021 through March 2022. Below you will find a summary of what the data revealed about the growing presence of private label brands on the [Digital Shelf](#).

Private Label Account and Category Penetration

We analyzed private label penetration at an account level to understand which private label brands have the greatest presence on retailer digital shelves, and to see which retailers may be leaving [product assortment](#) opportunities on the table.



Private Label Penetration Across Retail Grocer Websites March 2022



While Walmart leads the pack in total private label grocery SKUs carried on their website at over 12,000 total, H-E-B comes in at a close second with just over 10,000 private label SKUs. One other important factor regarding H-E-B is they are the leader in our analysis in overall private label penetration at 14.5% versus Walmart with only 10% penetration.

Source: DataWeave Assortment Analytics - The number of private label products and share of overall SKUs listed by leading US based grocery retailers that sell over 20,000 SKUs; Analysis taken March 1st - 17th, 2022